

Do Not Write Within Boxed Area.
For Engineering Office Use Only.

CITY OF NAPOLEON ENGINEERING DEPARTMENT SIGN PERMIT

(Please Print or Type)

Owner's Name *RAY RESTAURANT*

Address *1465 N. SCOTT*

Builder _____ Address _____ Tel. _____

Permit No.	<i>159</i>
Issued	<i>1/15/84</i>
By	<i>[Signature]</i>
Estimated Cost	<i>10,000</i>
Base Fee	<i>7,400 + 2,600</i>
Add	<i>14.50</i>
Total Fee	<i>46,520</i>

SIGN

BILLBOARD

AWNING

MARQUEE

Location of Project: *1465 N. SCOTT*

Additional Information: *A = 1 sign 28' x 4' = 4.00 + 14.20
B = 1 sign 3' x 4' = 4.00 + 15.00
C = 1 sign 3' x 4' = 4.00 + 15.00
D = 1 sign 3' x 4' = 4.00 + 15.00
E = 1 sign 3' x 4' = 4.00 + 15.00
Total = 28.00*

Dimensions: _____ Square Feet _____

Date: _____

Signature of Applicant *[Signature]*

White - Applicant

Yellow - Clerk-Treasurer

Pink - Engineering

Gold - County Auditor

Application Must Be Accompanied with Sketch and Description of Proposed Installation

*PAID
JAN 16 1984
CITY OF NAPOLEON*

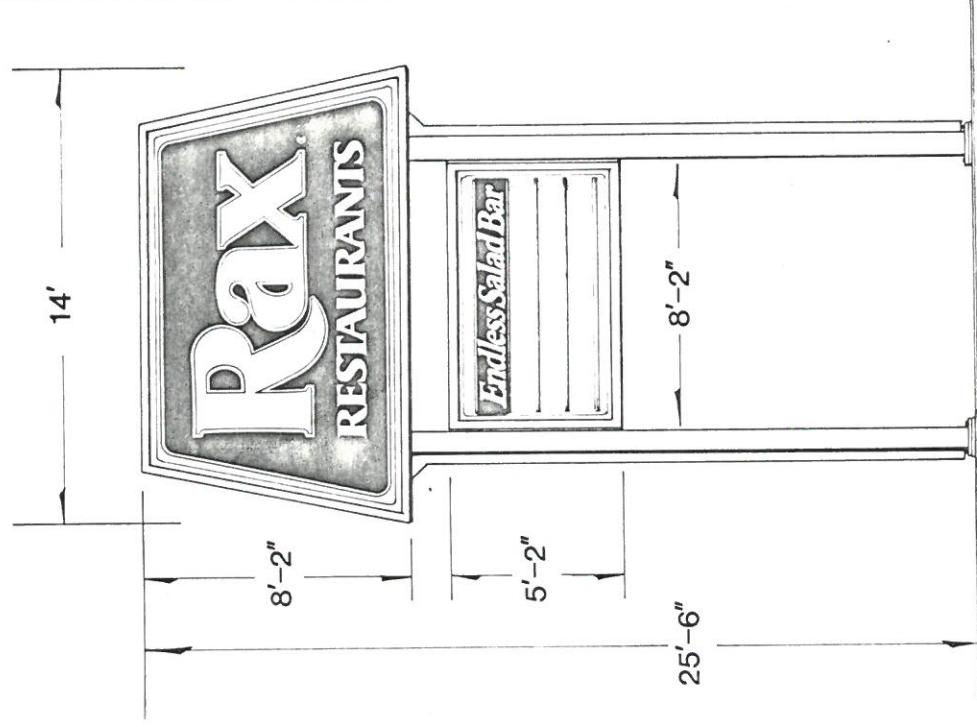
PRODUCT SPECIFICATIONS

VACUFORM CORPORATION
1877 E. 17TH AVENUE, P.O. BOX 30663, COLUMBUS, OH. 43290, (614) 294-2616

1877 E. 17TH AVENUE, P.O. BOX 30663, COLUMBUS, OH. 43290, (614) 294-2616

Rax
CLIENT
Pylon Sign-100
PRODUCT
7028
DESIGN NUMBER
Rax - 1
SHEET NUMBER
10/25/82
DATE

DESIGN DETAILS



Foundation Requirements:
Concrete footing (per pole),
52" x 52" x 60" deep (or per
local code or soil conditions)
1½" diameter "J" bolts (4)
by others.

ITEM NUMBER DESCRIPTION

V702900	PYLON 98" x 168" 2F 14X 2P 14" extruded aluminum cabinet; dark bronze finish, illuminated, embossed plastic face (hinged for service) <u>100 square feet.</u>
V703000	110 v 12 amps 1-15 amp circ. READR 62" x 98" 2F 10X BP 10" extruded aluminum cabinet, dark bronze finish, illuminated, embossed plastic face, tracked for four rows 8" letters. <u>42 square feet.</u>
V703100	110 v 5.4 amps 1-15 amp circ. POLES PACK (2), 17'3" W/TRIM Two 8" x 8" square steel tubes with attached match plates and base plates. Pole trim is sheet metal with mounting hardware. All finished dark bronze.
060.2260	FONT 250 EZ CHG ALT 8" BLACK 250 8" black letters for readerboard copy.
330.5015	CHANGER ZIP LTR Zip letter changer 6'-12' length.
330.5060	CABINET STORAGE Storage for 8" readerboard letters.

142 SQ.FT EACH FACE = 284 SQ.FT.
FEE = 18.20

A.

PRODUCT SPECIFICATIONS

VACUFORM CORPORATION

1877 E. 17TH AVENUE, P.O. BOX 30983, COLUMBUS, OH. 43230, (614) 294-2618

Rax

CLIENT
Directionals

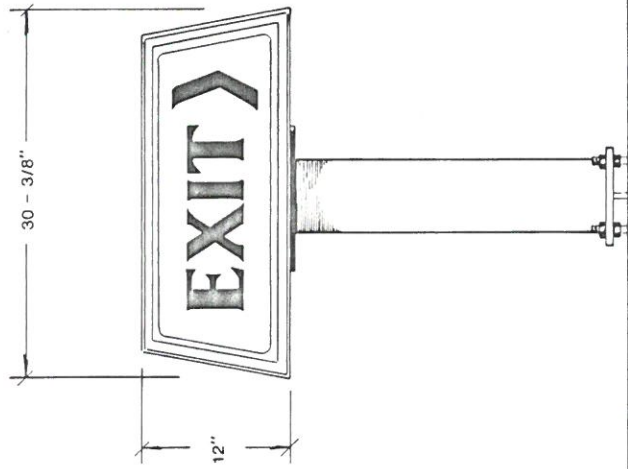
PRODUCT
822471

DESIGN NUMBER
Rax - 4

SHEET NUMBER
10/25/82

DATE

DESIGN DETAILS



Foundation Requirements:
Concrete: 12" x 12" x 24" deep
½" x 18" "J" bolts (4) by others.

ITEM NUMBER	DESCRIPTION
V650102	DIRECT 12 x 30 2F 1P <u>EXIT</u> 5" extruded aluminum cabinet, illuminated, plastic face. Includes steel support and base plate.
V650103	DIRECT 12 x 30 2F 1P P/U WD 5" extruded aluminum cabinet, illuminated, plastic face. Includes steel support and base plate.
V650104	DIRECT 12 x 30 2F 1P <u>ENTER</u> 5" extruded aluminum cabinet, illuminated, plastic face. Includes steel support and base plate.
823167	DIRECT 12 x 30 2F 1P "SPECIAL" 5" extruded aluminum cabinet, illuminated, plastic face. Includes steel support and base plate. Custom copy as required. Electrical requirements per sign: 110 v .8 amps 1-15 amp circ <i>B = 2.5 sq. ft. < 3 sq. ft. FEE = \$4.15</i> <i>C = 2.5 sq. ft. < 3 sq. ft. FEE = \$4.15</i>

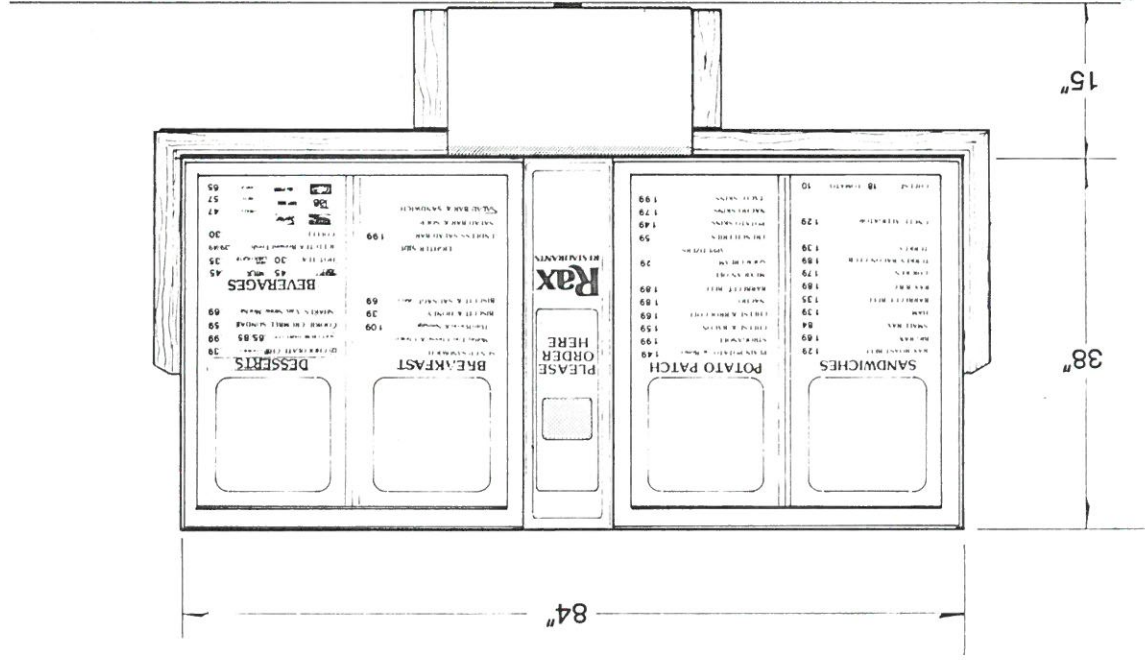
PRODUCT SPECIFICATIONS

VACUFORM CORPORATION
1877 E. 17TH AVENUE, P.O. BOX 30969, COLUMBUS, OH. 43230, (614) 294-2618

Rax

CLIENT
OMENU 38" x 84"
PRODUCT
822467
DESIGN NUMBER
Rax - 7
SHEET NUMBER
11/30/82
DATE

DESIGN DETAILS



Base plate mounts to 4 anchor bolts ($\frac{1}{2}$ " x 18") in concrete base, 18" x 18" x 36" (by installer).

ITEM NUMBER DESCRIPTION

823168	OMENU 38" x 84" W/SPEAKER Outdoor menu sign, illuminated. Includes wood trim, and pipe cover with pipe stub and mounting plate. Locking cover doors
823169	PACK, STRIPS & PRICE KIT Contains extra copy strips and price strips. (Only one pack needed for both indoor and outdoor menu.)
823362	PACK 38" x 84" OMENU FACES Contains four screen-printed plastic faces with item strips

Speaker menu includes a Marsh Model 831 speaker (installed). Wiring and vehicle detector by local installer.

22.17 SQ. FT. < 23 SQ. FT.
FEE = 15.15

PRODUCT SPECIFICATIONS

VACUFORM CORPORATION

1877 E. 17TH AVENUE, P.O. BOX 30963, COLUMBUS, OH. 43230, (614) 294-2618

Rax

CLIENT
Indiv. Letters

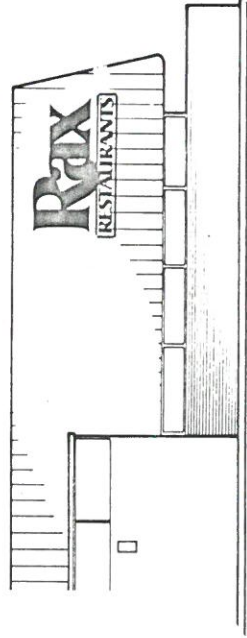
PRODUCT
823171

DESIGN NUMBER
Rax - 11

SHEET NUMBER
11/2/82

DATE

DESIGN DETAILS



TYPICAL SIDE ELEVATION

ITEM NUMBER	DESCRIPTION
823208	LETRS 36" x 75" RAX Fabricated sheet metal with dark bronze finish. White neon illumination. White plastic faces. <u>17 square feet</u> 110 v 1-15 amp circuit
823209	FASCIA 14" x 85" 1F WB 5" extruded aluminum cabinet, dark bronze finish, embossed plastic faces. <u>8.25 square feet</u> 110 v 1-15 amp circ. 1.6 amps

EACH = 25.25 SQ.FT. ← 24 SQ.FT.

FEE = \$5.30 EACH (x2)

E

PRODUCT SPECIFICATIONS

VACUFORM CORPORATION

1877 E. 17TH AVENUE, P.O. BOX 30863, COLUMBUS, OH. 43230, (614) 294-2818

Rax

CLIENT
Fascia Sign-5

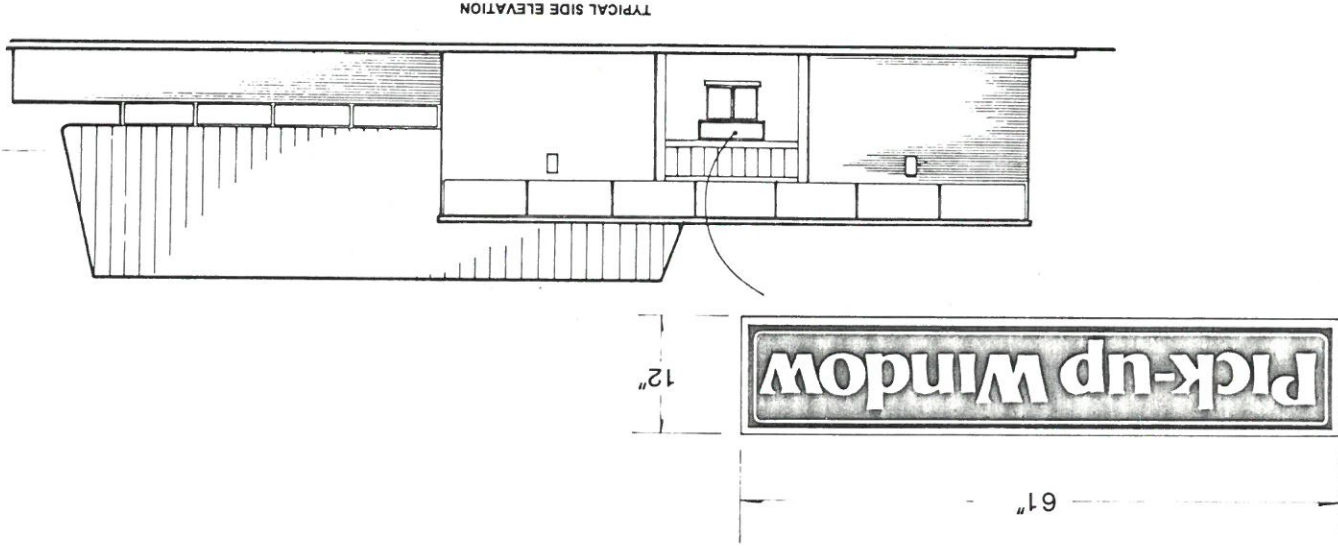
PRODUCT
6645

DESIGN NUMBER
Rax - 12

SHEET NUMBER
10/25/82

DATE

DESIGN DETAILS



ITEM NUMBER

V664500

DESCRIPTION

FASCIA 12 x 61 1F 5X WB P/U WD
5" extruded aluminum cabinet,
illuminated, with embossed
plastic face.
5 square feet.

110 v 1.2 amps 1-15 amp circ

5 sq. FT.
FEE = \$4.25

F